

---

# FACT BOOK

## 2008 – 2009



ATLANTIC CAPE COMMUNITY COLLEGE

INSTITUTIONAL RESEARCH, PLANNING & ASSESSMENT

## Atlantic Cape Community College

TABLE OF CONTENTS

Executive Summary .....	1
Atlantic Cape Highlights .....	2
Excellence .....	3
Table 1.1 • Graduate Data by Gender: Fall 2001 Cohort – Fall 2005 Cohort .....	3
Table 1.2 • Graduate Data by Ethnicity: Fall 2001 Cohort – Fall 2004 Cohort .....	4
Table 1.3 • Graduate Data by Ethnicity: Fall 2005 Cohort .....	5
Table 1.4 • FY 2004-FY 2008 Degrees Conferred By Major .....	6
Table 1.5 • Graduate Satisfaction .....	7
Figure 1.5 • 2008 Graduate Satisfaction .....	7
Table 1.6a • First Time Full Time, Degree Seeking Students: Fall to Spring Retention .....	8
Table 1.6b • First Time Full Time, Degree Seeking Students: Fall to Fall Retention.....	8
Table 1.7 • Fall 2006 Cohort and Fall 2007 Cohort .....	9
Table 1.8 • Success Rates.....	10
Table 1.9 • FT-PT Faculty Ratios.....	11
Table 1.10 • Employee Satisfaction.....	12
Figure 1.10 • FY 2008 Employee Satisfaction.....	12
Access.....	13
Table 2.1 • Atlantic Cape Fall Enrollment Summary and Comparison.....	13
Table 2.2 • Atlantic Cape Fiscal Year Credit Enrollment.....	14
Table 2.3 • Atlantic Cape FTE Enrollment.....	14
Table 2.4 • Enrollment by Major: FY 2004 - FY 2008 .....	15
Table 2.4 Continued• Enrollment by Major: Fall 2004 - Fall 2008.....	16
Table 2.5 • Fall Enrollment Demographics; Ethnicity: 2004 – 2008.....	17

Figure 2.5 • Fall Enrollment by Race/Ethnicity: 2007 vs. 2008.....17

Table 2.6 • Fall Enrollment Demographics; Gender: 2004 – 2008.....18

Figure 2.6 • Fall Enrollment by Gender & FT/PT Status: 2004 - 2008.....18

Table 2.7 • Fall Enrollment Demographics; Ethnicity & Gender: 2004 – 2008.....19

Table 2.8 • Enrollment by Race-Ethnicity, Gender, Enrollment Status: 2004 – 2008.....20

Table 2.9 • Fall Enrollment Demographics; Age: 2004 – 2008.....21

Figure 2.9 • Fall Enrollment by Age Group: 2008 .....21

Table 2.10 • Enrollment by Age Group & FT/PT Status: 2004 – 2008 .....22

Table 2.11 • First-Time Full-Time Demographics; Gender: Fall 2004-Fall 2008 Cohorts.....23

Table 2.12 • First-Time Full-Time Demographics; Ethnicity: Fall 2004-Fall 2008 Cohorts.....23

Table 2.13 • Atlantic County High School Penetration Data .....24

Table 2.14 • Cape May County High School Penetration Data.....25

Table 2.15 • Atlantic Cape Service Area High School Penetration Data .....25

Stewardship .....26

Table 3.1 • Tuition Rates: FY 2005 – FY 2008.....26

Figure 3.1 • Tuition Rates: FY 2005 – FY 2008.....26

Table 3.2 • Average Salaries of 9 month Instructional Staff: By Rank .....27

Table 3.3 • FT Faculty by Race and Ethnicity.....27

Table 3.4 • FT/FT Financial Aid Type: Amount and Percent.....28

Table 3.5 • Cost Per Full Time Equivalent (FTE).....29

## EXECUTIVE SUMMARY

This is the annual Atlantic Cape Community College (Atlantic Cape) Fact Book, which will be completed in the summer of each year. This document contains historical five year data useful to the planning, development, and attainment of Atlantic Cape's mission and goals. Data contained in the Fact Book includes enrollment demographics, headcounts and summary, college program information, graduation trends, and retention trends. This Fact Book is encouraged to be a resource for all members of the Atlantic Cape staff.

# ATLANTIC CAPE HIGHLIGHTS

## EXCELLENCE

- The graduation rate for the fall 2005 FT-FT cohort is 20%, with 268 graduates out of the 1328 FT-FT entering cohort. This is the highest rate in the past 5 years.
- Atlantic Cape retention rates increased 3% from the fall 2006 cohort (57%) to the fall 2007 cohort (60%).
- There were 719 degrees conferred in FY 2008. The largest graduating major was GENS (256 degrees) followed by BUSN (94 degrees).

## ACCESS

- Fall enrollments have continued to increase throughout the past 5 years, with females making up more than half of Atlantic Cape fall headcounts. The age group with the most headcount for fall 2008 is 18-19 with 29.7%, followed by 20-21 with 22.5%. Full-Time fall enrollment in 2008 surpassed part-time enrollment for the first time in the past 5 years.
- The number of public high school graduates in both Cape May and Atlantic Counties that have enrolled in the fall at Atlantic Cape directly after graduation has been steadily increasing. This percentage of students was only 19.9% (673 enrolled out of 3383.5 graduates) in the fall of 2003, while it is currently 25.64% in fall 2008 (1006 enrolled out of 3923.5 graduates). Overall, fall enrollment is up 1.2% from fall 2007 and male enrollment has increased 2.5% in fall 2008.

## STEWARDSHIP

- Tuition rates per credit hour increased 6.5% from \$83 in FY 2008 to \$88.4 in FY 2009.
- The average salary for all ranks of 9 month instructional staff in FY 2009 is \$59,679 which is a 3.4% increase from FY 2008.
- The full-time faculty is made up of 13% minorities and 87% white.
- Out of first time full time students in FY 2008, 46% received federal financial aid, compared to only 33% in FY 2007

# EXCELLENCE

TABLE 1.1 • GRADUATE DATA BY GENDER: FALL 2001 COHORT — FALL 2005 COHORT

Entering Cohort		Fall 2001 ( '02 '03 '04)		Fall 2002 ( '03 '04 '05)		Fall 2003 ( '04 '05 '06)		Fall 2004 ( '05 '06 '07)		Fall 2005 ( '06 '07 '08)	
	Male	420		473		503		524		553	
	Female	535		716		718		756		775	
	<b>Total</b>	<b>955</b>		<b>1189</b>		<b>1221</b>		<b>1280</b>		<b>1328</b>	
<b>Number of Graduates and Grad Rate</b>											
Graduates by Gender		Fall 2001 ( '02 '03 '04)		Fall 2002 ( '03 '04 '05)		Fall 2003 ( '04 '05 '06)		Fall 2004 ( '05 '06 '07)		Fall 2005 ( '06 '07 '08)	
	Male	60	14%	64	14%	64	13%	72	14%	95	17%
	Female	86	16%	146	20%	134	19%	170	22%	173	22%
	<b>Total</b>	<b>146</b>	<b>15%</b>	<b>210</b>	<b>18%</b>	<b>198</b>	<b>16%</b>	<b>242</b>	<b>19%</b>	<b>268</b>	<b>20%</b>

Source: IPEDS

TABLE 1.2 • GRADUATE DATA BY ETHNICITY: FALL 2001 COHORT – FALL 2004 COHORT

		Fall 2001 ('02 '03 '04)	Fall 2002 ('03 '04 '05)	Fall 2003 ('04 '05 '06)	Fall 2004 ('05 '06 '07)
Entering Cohort	<b>Total</b>	<b>955</b>	<b>1189</b>	<b>1221</b>	<b>1280</b>
	Nonresident alien	18	45	12	0
	Black non-Hispanic	139	180	188	171
	American Indian or Alaska Native	3	2	3	0
	Asian	50	91	75	72
	Hispanic	43	68	107	121
	White	623	722	690	682
	Unknown	79	81	146	234

Graduates by Ethnicity	<b>Number of Graduates and Grad Rates</b>									
		Fall 2001 ('02 '03 '04)		Fall 2002 ('03 '04 '05)		Fall 2003 ('04 '05 '06)		Fall 2004 ('05 '06 '07)		
	Nonresident alien	0	0%	8	18%	3	25%	0	0%	
Black non-Hispanic	12	9%	18	10%	34	18%	37	22%		
American Indian or Alaska Native	0	0%	1	50%	0	0%	0	0%		
Asian	6	12%	15	16%	11	15%	16	22%		
Hispanic	3	7%	13	19%	8	7%	17	14%		
White	114	18%	139	19%	127	18%	137	20%		
Unknown	11	14%	16	20%	15	10%	35	15%		
<b>Total</b>	<b>146</b>	<b>15%</b>	<b>210</b>	<b>18%</b>	<b>198</b>	<b>16%</b>	<b>242</b>	<b>19%</b>		

Source: IPEDS

TABLE 1.3 • GRADUATE DATA BY ETHNICITY: FALL 2005 COHORT

Entering Cohort		Fall 2005 ( '06 '07 '08)	
	Unknown	120	
	African American	194	
	American Indian	1	
	Asian	98	
	Hispanic	129	
	White	782	
	Non-Resident Alien	4	
	<b>Total</b>	<b>1328</b>	
Graduates by Ethnicity		Graduates	Grad Rate
	Unknown	28	23%
	African American	40	21%
	American Indian	0	0%
	Asian	16	16%
	Hispanic	12	9%
	White	171	22%
	Non-Resident Alien	1	25%
	<b>Total</b>	<b>268</b>	<b>20%</b>

Source: IPEDS

TABLE 1.4 • FY 2004-FY 2008 DEGREES CONFERRED BY MAJOR

	FY 2004	FY 2005	FY 2006	FY 2007	FY 2008
<b>AA Degree</b>	<b>132</b>	<b>144</b>	<b>154</b>	<b>131</b>	<b>125</b>
ARTS	8	4	6	5	3
BUSA	1	4	6	4	4
CDCC	1	5	8	3	4
COMM				3	7
DSGN					1
EDUC	50	57	46	51	43
HIST	3	10	12	13	14
HUMT	1	3	1	1	1
LIBA	42	26	26	8	4
LITE	6	7	12	11	10
PERF	1	2			1
PHIL				1	2
PSYC	16	22	32	24	29
SOCL	2	4	5	4	
SOCS				2	2
SOCW	1			1	
<b>AS Degree</b>	<b>363</b>	<b>318</b>	<b>411</b>	<b>433</b>	<b>439</b>
BIOL	2	3	3	15	8
BUSE				3	3
BUSN	138	78	133	121	94
CHEM	2	2	1	4	4
CISM	26	19	11	8	15
COCJ				1	1
COJJ			1		1
CRIM	33	46	45	32	39
GENS	142	140	195	219	256
HESC			1	1	2
LEGL	4	4	6	5	3
MATH	3	7	5	5	4
SCMT	11	13	1	5	
SOCA	2	6	9	14	9
<b>AAS Degree</b>	<b>284</b>	<b>172</b>	<b>192</b>	<b>163</b>	<b>155</b>
ACCG	6	8	9	7	10
ACCT	1			2	
ACIS				2	1
BAKE			4	2	5
BUSI	11	9	6	11	4
CFSM	2	2	2	2	2
CPRO	4	2			7
CPSS	113	58	28	2	7
CULN	23	13	24	21	19
HOSP	52	12	14	16	7
LEGA		1	5	3	4
MTEC	1	1	1	1	3
NURS	58	57	88	85	75
OSTM	4	7	7	8	7
PTAS	7	1	1		
RESP			1		2
WEBT	2	1	2	1	2

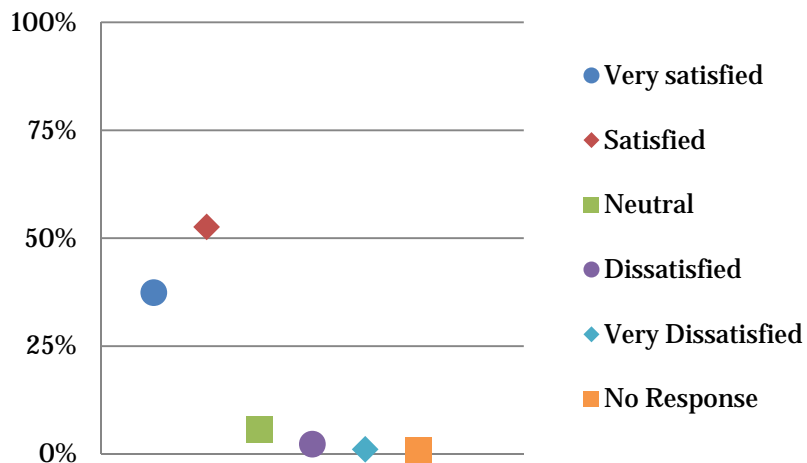
Source: Sure Completions Files

TABLE 1.5 • GRADUATE SATISFACTION

	2007 Graduates	2008 Graduates
<b>Very satisfied</b>	245 45.5%	130 37.4%
<b>Satisfied</b>	269 49.9%	183 52.6%
<b>Neutral</b>	13 2.4%	20 5.7%
<b>Dissatisfied</b>	5 0.9%	8 2.3%
<b>Very Dissatisfied</b>	7 1.3%	4 1.1%
<b>No Response</b>	0 0.0%	3 0.9%
<b>TOTAL</b>	539	348

Source: Atlantic Cape Institutional Research Graduate Exit Survey

FIGURE 1.5 • 2008 GRADUATE SATISFACTION



Source: Atlantic Cape Institutional Research Graduate Exit Survey

**TABLE 1.6A • FIRST TIME FULL TIME, DEGREE SEEKING STUDENTS: FALL TO SPRING RETENTION**

Table A: Fall to Spring Retention of First-Time Full-Time, Degree Seeking Students

Year	Fall 2004- Spring 2005	Fall 2005- Spring 2006	Fall 2006- Spring 2007	Fall 2007- Spring 2008
<b>FT/FT Enrolled</b>	1280	1328	1358	1120
<b>Number Retained</b>	1033	1062	1070	922
<b>Retention Rate</b>	81%	80.0%	78.8%	82.3%

Fall to Spring Retention Source: Atlantic Cape 10<sup>th</sup> Day Files

**TABLE 1.6B • FIRST TIME FULL TIME, DEGREE SEEKING STUDENTS: FALL TO FALL RETENTION**

Table B: Fall to Fall Retention of First-Time Full-Time, Degree Seeking Students

Year	Fall 2004- Fall 2005	Fall 2005- Fall 2006	Fall 2006- Fall 2007	Fall 2007- Fall 2008
<b>FT/FT Enrolled</b>	1280	1328	1358	1120
<b>Number Retained</b>	736	756	771	673
<b>Retention Rate</b>	57.0%	57.0%	56.0%	60.0%

Fall to Fall Retention Source: IPEDS

TABLE 1.7 • FALL 2006 COHORT AND FALL 2007 COHORT

## One Year Retention of Full-Time First-Time, Degree Seeking Students

	Enrollment Fall 2006	Returned Fall 2007	06 to 07 Retention Rate	Enrollment Fall 2007	Returned Fall 2008	07 to 08 Retention Rate
<b>Total</b>	1358	771	57%	1120	688	61%
<b>Gender</b>						
Male	575	313	54%	503	298	59%
Female	783	458	58%	617	390	63%
<b>Ethnicity</b>						
Not Reported	133	79	59%	76	51	67%
African Amer.	214	95	44%	165	80	48%
Amer. Indian	3	3	100%	0	0	0%
Asian	92	57	62%	72	56	78%
Hispanic	155	83	54%	149	84	56.4%
White	761	454	60%	658	417	63%
<b>Age</b>						
<18	17	9	53%	15	8	53%
18-19	892	543	61%	902	581	64%
20-21	180	88	49%	84	40	48%
22-24	82	43	52%	42	18	43%
25-29	83	41	49%	28	18	64%
30-34	35	14	40%	16	5	31%
35-39	32	14	44%	6	3	50%
40-49	21	10	48%	16	9	56%
50-64	9	3	33%	3	1	33%
65+	7	6	86%	8	5	63%
<b>County of Origin</b>						
Atlantic	1018	598	59%	797	492	62%
Cape May	271	139	51%	235	144	61%
Other	69	34	49%	88	52	59%

Data from Atlantic Cape 10<sup>th</sup> day files and  
Fall 2007- Fall 2008 numbers do not match IPEDS due to change in student identifiers for 15 students.

TABLE 1.8 • SUCCESS RATES

Fall Cohort Graduation Year	2001 2004	2002 2005	2003 2006	2004 2007	2005 2008
Number	955	1189	1221	1280	1328
Transfer/Grad	255	324	306	373	405
Success %	26.7%	27.2%	25.1%	29.1%	30.5%

Source: IPEDS

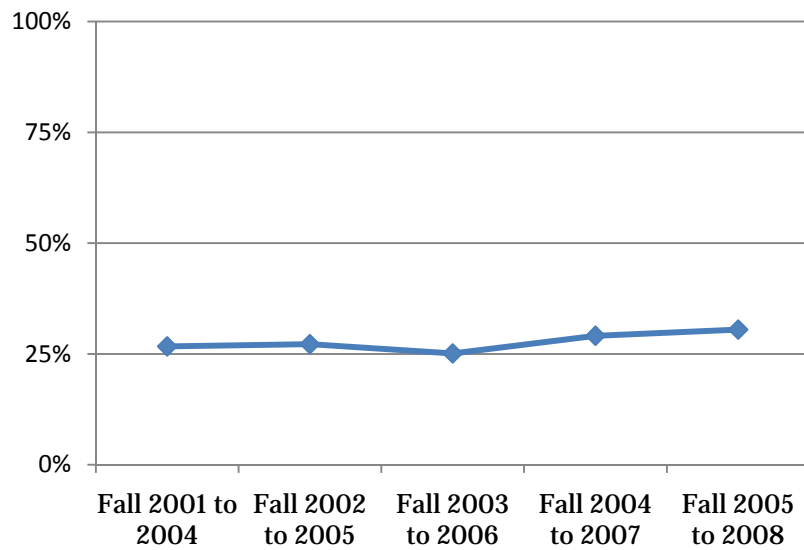


TABLE 1.9 • FT-PT FACULTY RATIOS

	Fall 2004	Fall 2005	Fall 2006	Fall 2007	Fall 2008
<b>Headcount</b>					
<b>Full-Time</b>	77	86	100	102	105
	20.2%	22.8%	26.0%	26.3%	21.5%
<b>Part-Time</b>	304	292	284	286	384
	79.8%	77.2%	74.0%	73.7%	78.5%
<b>Total</b>	381	378	384	388	489
<b>Credits Taught</b>					
<b>Full-Time</b>	26017	28526	32028	33350	33518
	50.5%	49.4%	49%	48.6%	47.3%
<b>Part-Time</b>	25461	29230	33364	35327	37270
	49.5%	50.6%	51%	51.4%	52.7%
<b>Total</b>	51478	57756	65392	68677	70788

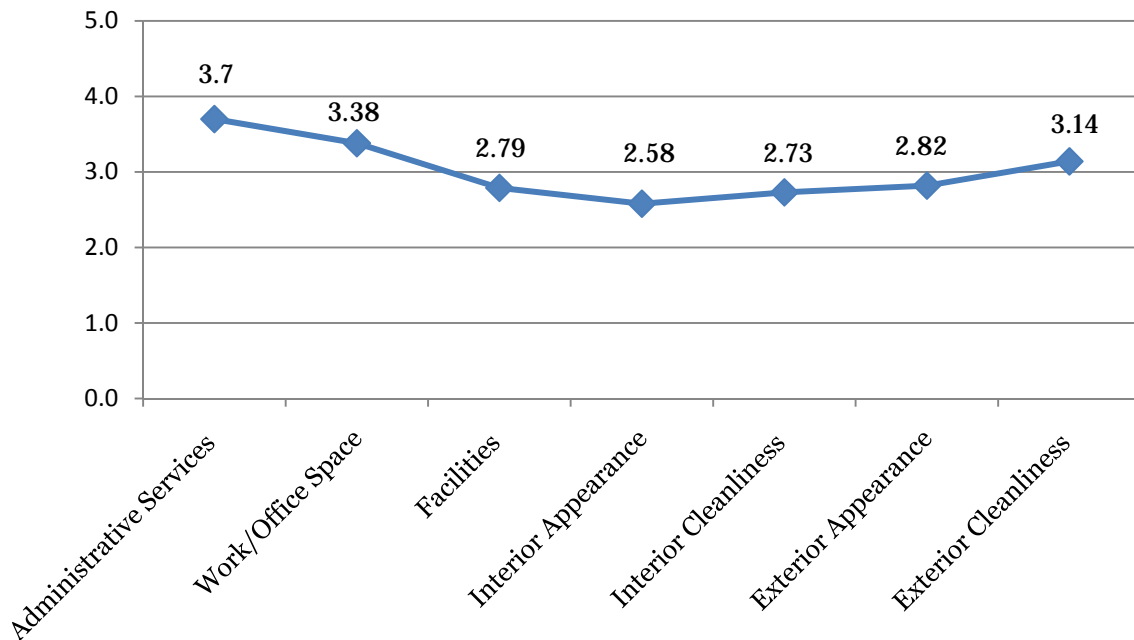
Source: Internal Data Collection

TABLE 1.10 • EMPLOYEE SATISFACTION

Overall Satisfaction at Primary Campus	FY 2008
Administrative Services	3.7
Work/Office Space	3.38
Facilities	2.79
Interior Appearance	2.58
Interior Cleanliness	2.73
Exterior Appearance	2.82
Exterior Cleanliness	3.14

Source: Atlantic Cape Employee Satisfaction Survey

FIGURE 1.10 • FY 2008 EMPLOYEE SATISFACTION



Source: Atlantic Cape Employee Satisfaction Survey  
 All numbers are out of a 5 point scale with 5=Very Satisfied - 1=Very Dissatisfied

## ACCESS

TABLE 2.1 • ATLANTIC CAPE FALL ENROLLMENT SUMMARY AND COMPARISON

	Fall 2007	Fall 2008	Difference	% Change
<b>Total Students</b>	<b>6922</b>	<b>7007</b>	<b>85</b>	<b>1.23%</b>
Full Time	3403	3651	248	7.29%
Part Time	3519	3356	-163	-4.63%
<b>Gender</b>				
Male	2616	2681	65	2.48%
Female	4306	4326	20	0.46%
<b>Age Distribution</b>				
<18	52	71	19	36.54%
18-19	1952	2078	126	6.45%
20-21	1469	1575	106	7.22%
22-24	972	980	8	0.82%
25-29	812	816	4	0.49%
30-34	486	420	-66	-13.58%
35-39	383	303	-80	-20.89%
40-49	543	512	-31	-5.71%
50-64	226	211	-15	-6.64%
65+	27	41	14	51.85%
<b>Ethnic Origin</b>				
Not Reported	406	532	126	31.03%
Non Resident Alien	38	109	71	186.84%
African American	994	899	-95	-9.56%
American Indian	18	12	-30	-33.33%
Asian	575	553	-22	-3.83%
Hispanic	821	837	16	1.95%
White	4070	4065	-5	-0.12%

Source IPEDS

Non Resident Alien was added in Fall 2008 and is a new classification

TABLE 2.2 • ATLANTIC CAPE FISCAL YEAR CREDIT ENROLLMENT

	FY 04	FY 05	FY 06	FY 07	FY 08
<b>Credit Hours</b>	126,611	140,220	140,978	144,183	154,380
<b>Growth Rate</b>		10.75%	0.54%	2.27%	7.07%

Source: IPEDS

TABLE 2.3 • ATLANTIC CAPE FTE ENROLLMENT

	FY 04	FY 05	FY 06	FY 07	FY 08
<b>Credit Hour FTE</b>	4220	4674	4699	4806	5146

Source: IPEDS

TABLE 2.4 • ENROLLMENT BY MAJOR: FY 2004 - FY 2008

Major	Fall 2004	Spring 2005	Fall 2005	Spring 2006	Fall 2006	Spring 2007	Fall 2007	Spring 2008	Fall 2008
ACCG	96	84	102	89		98	122	119	117
ACCT	8	9	6	4	7	3	1	1	2
ACIS	21	22	24	19	24	19	17	19	14
ARTS	68	69	72	79	79	67	64	57	66
BAKE	4	5	18	34	44	43	53	49	67
BIOL	94	88	104	109	130	119	126	121	140
BTEC								1	1
BUSA	101	93	100	90	111	100	110	98	98
BUSE	19	19	29	33	27	15	17	21	22
BUSI	63	59	83	74	58	65	77	67	80
BUSN	412	409	497	413	454	436	439	477	524
CBPM									
CDCC	76	75	67	55	78	69	76	77	66
CFSM	14	11	14	10	13	8	9	9	7
CHEM	25	26	19	14	26	28	35	32	37
CISM	158	144	135	123	132	125	104	99	106
COCJ	7	7	10	5	9	9	11	13	9
COJJ	5	2	2	2	2	1	1	1	
COMM					6	36	68	74	102
COST	1						1		
CPRO	72	75	77	60	69	53	75	64	71
CPSS	46	43	41	30	36	31	33	28	41
CRIM	317	299	323	305	328	319	392	390	446
CULN	342	297	297	268	300	277	294	278	278
CULT						3	5	3	2
DBSE								2	4
DSGN						2	28	27	41
EDUC	464	427	492	453	510	480	510	482	571
ELEC							1		
GENS	1362	1418	1561	1550	1760	1652	1864	1719	1862
HESC	11	9	17	14	31	35	23	14	9
HIST	43	53	106	101	93	95	88	61	77
HOSP	84	82	68	61	68	61	77	89	94
HUMT	12	10	20	14	13	15	13	11	18
HUSV									11
LEGA	25	31	37	25	25	33	36	32	35
LEGL	42	42	40	43	48	41	39	38	39
LIBA	298	220	124	87	62	55	27	17	14
LITE	36	41	74	64	62	60	50	53	47
MATH	43	44	43	40	47	35	51	47	73
MCSE							1		1
MTEC	7	6	8	10	15	19	16	11	3
MUSC	2	3	1	1					
NURG			1	1					
NURS	949	973	1031	1062	1045	1015	973	912	943
OSCB									1
OSTM	57	49	46	45	33	28	30	28	27
OTAS	1	1							

Source: Atlantic Cape 10<sup>th</sup> day files

TABLE 2.4 CONTINUED • ENROLLMENT BY MAJOR: FALL 2004 - FALL 2008

Major	Fall 2004	Spring 2005	Fall 2005	Spring 2006	Fall 2006	Spring 2007	Fall 2007	Spring 2008	Fall 2008
PERF	32	20	37	35	32	32	36	33	40
PHIL	2	5	7	11	12	9	7	3	6
PREL	1	1							
PSYC	160	143	215	211	210	207	214	195	206
PTAS	48	30	21	14	3	3	2	1	1
RESP	16	18	19	22	15	13	26	25	23
SCMT	44	44	25	20	11	7	5	3	3
SOCA	85	104	112	100	115	104	109	113	80
SOCL	33	25	22	20	20	13	26	31	27
SOCS	11	11	16	15	15	11	12	12	17
SOCW	4	2	4	4	2	2	2	2	
TRAV	2	1	2	1	11	12	11	8	
TSHP									
UNDE	447	465	398	439	431	413	436	438	367
WEBT	18	16	16	18	17	16	11	7	9
ZACT	6	7	6	6	4	5	8	9	6
ZADS	14	19	25	21	26	17	18	19	20
ZASP	3	1	2	1	1	1	1	1	
ZBAK	13	11	7	7	9	8	7	4	8
ZBIL	1	2	1	1					
ZCAS				1		2	2	1	1
ZCAT	2	1	1	1	1		3	3	2
ZCDA	3		3	5	6	4	6	4	7
ZCIV				1	1	1	1		
ZEIB		1	2	2	1	1	1		1
ZEOS			1	1			1	1	1
ZFSM	1		1		1		1	1	1
ZHFS			1	2					
ZHOS	3	2	2	1	1	3	2	2	3
ZHRP	3	4	4	7	4	1	5	4	1
ZLES	1								
ZLOS	2		1	1	2	1	1	1	1
ZMES	3	3	2	2	1	3	1		1
ZMMS	1	2	2	1	1	1			
ZMOS	4	1	1	2	2	2	3	1	2
ZOAS	1								
ZOFA									
ZOFP									1
ZPCS	2	1			1	1	1		1
ZRIM	1		1	1		1	2	1	2
ZSBM	2	6	5	4	5	5	2	1	2
ZTRV			2		2	2	1	1	
ZVIS									
ZWDP							1		1
ZWSP	1	2	2	1	3				
ZWVP									
Unknown	160	159	190	179					
<b>Total</b>	<b>6515</b>	<b>6352</b>	<b>6845</b>	<b>6545</b>	<b>6815</b>	<b>6451</b>	<b>6922</b>	<b>6566</b>	<b>7007</b>

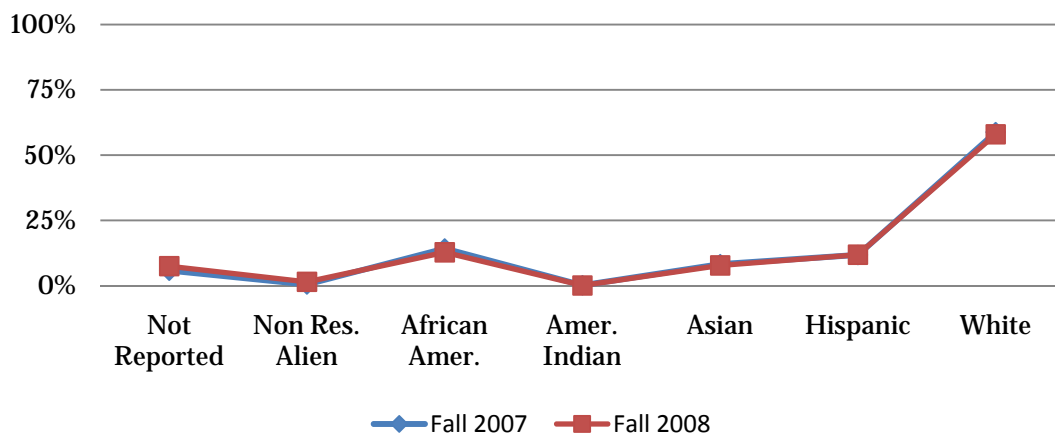
Source: Atlantic Cape 10<sup>th</sup> day files

TABLE 2.5 • FALL ENROLLMENT DEMOGRAPHICS; ETHNICITY: 2004 – 2008

Race/Ethnicity	Fall 2004		Fall 2005		Fall 2006		Fall 2007		Fall 2008	
<b>Not Reported</b>	769	11.8%	727	10.6%	688	10.1%	406	5.8%	532	7.5%
<b>Non Res. Alien</b>			45	0.6%	19	0.2%	38	0.5%	109	1.5%
<b>African Amer.</b>	904	13.8%	940	13.7%	948	13.9%	994	14.3%	899	12.8%
<b>Amer. Indian</b>	14	0.2%	20	0.2%	19	0.2%	18	0.2%	12	0.1%
<b>Asian</b>	484	7.4%	577	8.4%	542	7.9%	575	8.3%	553	7.8%
<b>Hispanic</b>	641	9.8%	671	9.8%	739	10.8%	821	11.8%	837	11.9%
<b>White</b>	3703	56.8%	3865	56.4%	3860	56.6%	4070	58.8%	4065	58.0%
<b>Total</b>	<b>6515</b>		<b>6845</b>		<b>6815</b>		<b>6922</b>		<b>7007</b>	

Source: IPEDS

FIGURE 2.5 • FALL ENROLLMENT BY RACE/ETHNICITY: 2007 vs. 2008



Source: IPEDS

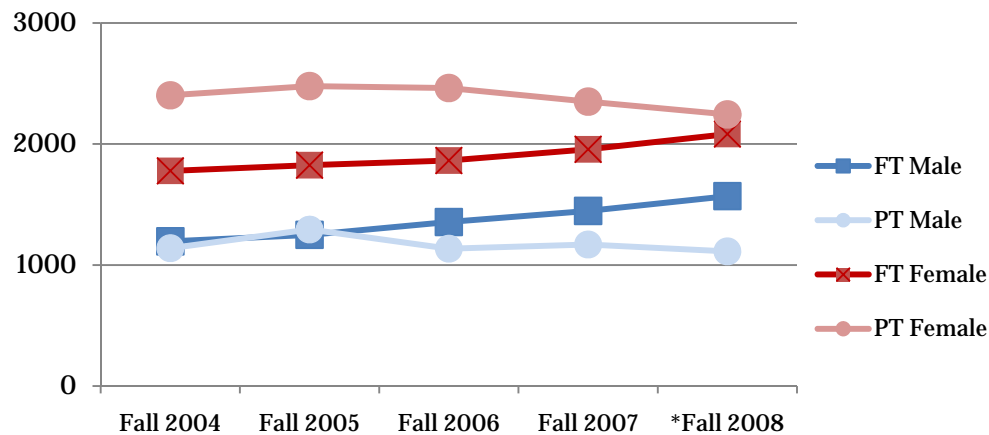
TABLE 2.6 • FALL ENROLLMENT DEMOGRAPHICS; GENDER: 2004 – 2008

	Fall 2004		Fall 2005		Fall 2006		Fall 2007		*Fall 2008	
<b>Gender</b>										
<b>Total Male</b>	2335	35.8%	2542	37.1%	2490	36.5%	2616	37.8%	2681	38.3%
Full Time	1196	18.4%	1249	18.2%	1355	19.9%	1447	20.9%	1569	22.4%
Part Time	1139	17.5%	1293	18.9%	1135	16.7%	1169	16.9%	1112	15.9%
<b>Total Female</b>	4180	64.2%	4303	62.9%	4325	63.5%	4306	62.2%	4326	61.7%
Full Time	1778	27.3%	1825	26.7%	1863	27.3%	1956	28.3%	2082	29.7%
Part Time	2402	36.9%	2478	36.2%	2462	36.1%	2350	33.9%	2244	32.0%
<b>Total by Gender</b>	<b>6515</b>		<b>6845</b>		<b>6815</b>		<b>6922</b>		<b>7007</b>	

Source: IPEDS

\*Note: Any unknown gender was combined into the Male Category

FIGURE 2.6 • FALL ENROLLMENT BY GENDER & FT PT STATUS: 2004 - 2008



Source: IPEDS

**TABLE 2.7 • FALL ENROLLMENT DEMOGRAPHICS; ETHNICITY & GENDER:  
2004 – 2008**

	2004		2005		2006		2007		2008	
<b>Male</b>										
Unknown	295	4.5%	298	4.3%	270	3.9%	152	2.2%	191	2.7%
Non Res. Alien			20	0.2%	6	0.1%	11	0.1%	38	0.5%
African Amer.	275	4.2%	278	4.0%	257	3.7%	321	4.6%	297	4.2%
Amer. Indian	4	.06%	7	0.1%	7	0.1%	6	0.1%	5	.07%
Asian	217	3.3%	240	3.5%	251	3.6%	258	3.7%	246	3.5%
Hispanic	194	2.9%	242	3.5%	258	3.7%	306	4.4%	312	4.4%
White	1350	20.7%	1457	21.3%	1441	21.1%	1562	22.5%	1592	22.7%
<b>Female</b>										
Unknown	474	7.2%	429	6.2%	418	6.1%	254	3.6%	341	4.8%
Non Res. Alien			25	0.3%	13	0.2%	27	0.3%	71	1.0%
African Amer.	629	9.6%	662	9.6%	691	10.1%	673	9.7%	602	8.5%
Amer. Indian	10	0.1%	13	0.2%	12	0.1%	12	0.1%	7	0.1%
Asian	267	4.1%	337	4.9%	291	4.2%	317	4.5%	307	4.3%
Hispanic	447	6.8%	429	6.2%	481	7.0%	515	7.4%	525	7.5%
White	2353	36.1%	2408	35.1%	2419	35.5%	2508	36.2%	2473	35.3%
<b>Totals</b>	<b>6515</b>		<b>6845</b>		<b>6815</b>		<b>6922</b>		<b>7007</b>	

Source: IPEDS

TABLE 2.8 • ENROLLMENT BY RACE-ETHNICITY, GENDER, ENROLLMENT STATUS: 2004 – 2008

		2004	2005	2006	2007	2008
<b>Full-Time</b>						
<b>Male</b>	<b>Unknown Race</b>	169	145	150	87	109
	<b>Non Res. Alien</b>		15	6	11	23
	<b>African Amer.</b>	126	129	133	163	147
	<b>Amer. Indian</b>	3	3	4	3	2
	<b>Asian</b>	102	110	113	136	147
	<b>Hispanic</b>	86	111	133	159	168
	<b>White</b>	710	736	816	888	973
<b>Female</b>	<b>Unknown Race</b>	220	180	181	121	150
	<b>Non Res. Alien</b>		22	11	23	50
	<b>African Amer.</b>	244	254	275	254	268
	<b>Amer. Indian</b>	1	2	4	3	4
	<b>Asian</b>	116	187	150	161	155
	<b>Hispanic</b>	176	155	190	232	221
	<b>White</b>	1021	1025	1052	1162	1234
<b>Part-Time</b>						
<b>Male</b>	<b>Unknown Race</b>	126	153	120	65	82
	<b>Non Res. Alien</b>		5			15
	<b>African Amer.</b>	149	149	124	158	150
	<b>Amer. Indian</b>	1	4	3	3	3
	<b>Asian</b>	115	130	138	156	99
	<b>Hispanic</b>	108	131	125	147	144
	<b>White</b>	640	721	625	674	619
<b>Female</b>	<b>Unknown Race</b>	254	249	237	133	191
	<b>Non Res. Alien</b>		3	2	4	21
	<b>African Amer.</b>	385	408	416	419	334
	<b>Amer. Indian</b>	9	11	8	9	3
	<b>Asian</b>	151	150	141	122	152
	<b>Hispanic</b>	271	274	291	283	304
	<b>White</b>	1332	1383	1367	1346	1239

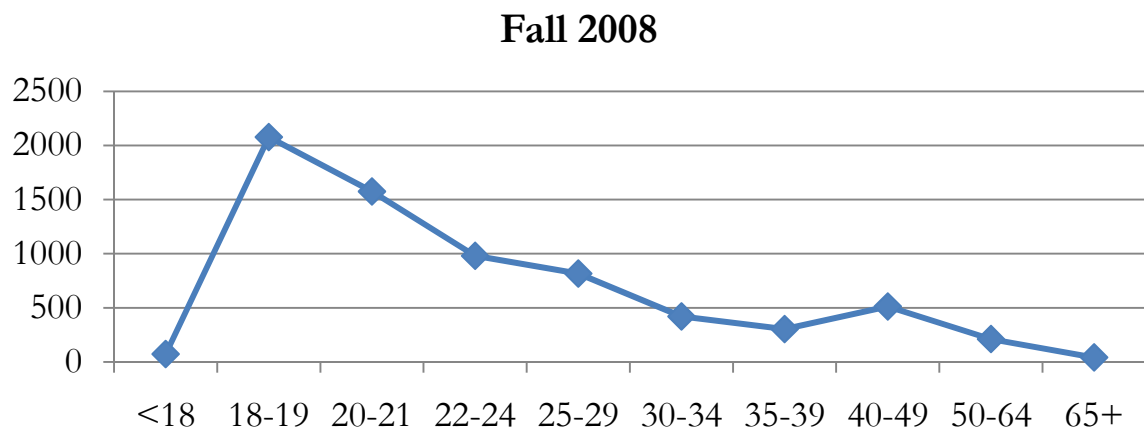
Source: IPEDS

TABLE 2.9 • FALL ENROLLMENT DEMOGRAPHICS; AGE: 2004 – 2008

	Fall 2004		Fall 2005		Fall 2006		Fall 2007		Fall 2008	
<b>Age</b>										
<18	54	0.83%	45	0.66%	52	0.76%	52	0.75%	72	1.03%
18-19	1560	23.94%	1652	24.13%	1786	26.21%	1952	28.20%	2078	29.66%
20-21	1302	19.98%	1361	19.88%	1333	19.56%	1469	21.22%	1575	22.48%
22-24	935	14.35%	1045	15.27%	929	13.63%	972	14.04%	980	13.99%
25-29	757	11.62%	825	12.05%	875	12.84%	812	11.73%	816	11.65%
30-34	515	7.90%	516	7.54%	504	7.40%	486	7.02%	420	5.99%
35-39	437	6.71%	439	6.41%	430	6.31%	383	5.53%	303	4.32%
40-49	673	10.33%	645	9.42%	601	8.82%	543	7.84%	512	7.31%
50-64	239	3.67%	245	3.58%	264	3.87%	226	3.26%	211	3.01%
65+	43	0.66%	72	1.05%	41	0.60%	27	0.39%	41	0.59%
<b>Total</b>	<b>6515</b>		<b>6845</b>		<b>6815</b>		<b>6922</b>		<b>7007</b>	

Source: IPEDS

FIGURE 2.9 • FALL ENROLLMENT BY AGE GROUP: 2008



Source: IPEDS

TABLE 2.10 • ENROLLMENT BY AGE GROUP &amp; FT/PT STATUS: 2004 – 2008

	Fall 2004		Fall 2005		Fall 2006		Fall 2007		Fall 2008	
	FT	PT	FT	PT	FT	PT	FT	PT	FT	PT
<18	18	36	20	25	24	28	18	34	30	41
18-19	1228	332	1305	347	1456	330	1580	372	1721	357
20-21	843	459	877	484	852	481	917	552	1027	548
22-24	365	570	391	654	359	570	399	573	403	577
25-29	204	553	215	610	239	636	230	582	217	599
30-34	120	395	83	433	95	409	103	383	100	320
35-39	81	356	61	378	73	357	53	330	45	258
40-49	74	599	67	578	83	518	81	462	78	434
50-64	25	214	24	221	27	237	21	205	17	194
65+	16	27	31	41	10	31	1	26	13	28
<b>Total</b>	<b>6515</b>		<b>6845</b>		<b>6815</b>		<b>6922</b>		<b>7007</b>	

Source: IPEDS

**TABLE 2.11 • FIRST-TIME FULL-TIME DEMOGRAPHICS; GENDER: FALL 2004-FALL 2008 COHORTS**

	Fall 2004		Fall 2005		Fall 2006		*Fall 2007		Fall 2008	
<b>Male</b>	524	40.9%	553	41.6%	575	42.3%	503	44.9%	<b>509</b>	<b>47.8%</b>
<b>Female</b>	756	59.1%	775	58.4%	783	57.7%	617	55.1%	<b>556</b>	<b>52.2%</b>
<b>Total</b>	1280		1328		1358		1120		<b>1065</b>	

Source: IPEDS

\*2007 Cohort Source: Atlantic Cape 10<sup>th</sup> Day Files. Updated files have been submitted to IPEDS Degree Seeking First-Time Full-Time students

**TABLE 2.12 • FIRST-TIME FULL-TIME DEMOGRAPHICS; ETHNICITY: FALL 2004-FALL 2008 COHORTS**

	Fall 2004		Fall 2005		Fall 2006		Fall 2007		Fall 2008	
<b>Not Reported</b>	234	18.28%	120	9.04%	132	9.72%	76	6.79%	81	7.61%
<b>Non Res. Alien</b>			4	0.30%	2	0.15%			30	2.82%
<b>African Amer.</b>	171	13.36%	194	14.61%	214	15.76%	165	14.73%	138	12.96%
<b>Amer. Indian</b>			1	0.08%	3	0.22%			2	0.19%
<b>Asian</b>	72	5.63%	98	7.38%	92	6.77%	72	6.43%	50	4.69%
<b>Hispanic</b>	121	9.45%	129	9.71%	155	11.41%	149	13.30%	123	11.55%
<b>White</b>	682	53.28%	782	58.89%	760	55.96%	658	58.75%	641	60.19%
<b>Total</b>	1280		1328		1358		1120		1065	

Source: IPEDS

\*2007 Cohort Source: Atlantic Cape 10<sup>th</sup> Day Files. Updated files have been submitted to IPEDS Degree Seeking First-Time Full-Time students

TABLE 2.13 • ATLANTIC COUNTY HIGH SCHOOL PENETRATION DATA

Year		2004	2005	2006	2007	2008
<b>Absegami</b>	HS Grads	428.5	459	512.5	498.5	479
	Fall Enrolled	99	144	140	124	154
		23.10%	31.40%	27.30%	24.90%	32.15%
<b>Atlantic City</b>	HS Grads	494	491.5	503.5	559	477
	Fall Enrolled	112	82	141	155	107
		22.70%	16.70%	28.00%	27.70%	22.43%
<b>Buena</b>	HS Grads	190	214.5	209	216.5	207
	Fall Enrolled	42	47	55	70	50
		22.10%	21.90%	26.30%	32.30%	24.15%
<b>Egg Harbor Twp</b>	HS Grads	375	406	445	531	500
	Fall Enrolled	102	119	123	159	164
		27.20%	29.30%	27.60%	29.90%	32.80%
<b>Hammonton</b>	HS Grads	276	276	328.5	305	322.5
	Fall Enrolled	23	25	34	25	42
		8.30%	9.10%	10.40%	8.20%	13.02%
<b>Mainland</b>	HS Grads	375.5	362	380.5	378.5	379
	Fall Enrolled	72	79	71	82	84
		19.20%	21.80%	18.70%	21.70%	22.16%
<b>Oakcrest</b>	HS Grads	284	322.5	347	355.5	372
	Fall Enrolled	87	106	92	108	122
		30.60%	32.90%	26.50%	30.40%	32.80%
<b>Pleasantville</b>	HS Grads	201	200	192	190	246
	Fall Enrolled	36	28	25	38	51
		17.90%	14.00%	13.00%	20.00%	20.73%
<b>Totals</b>	HS Grads	2624	2731.5	2918	3034	2982.5
	Fall Enrolled	573	630	681	761	774
		21.80%	23.10%	23.30%	25.10%	25.95%

Source listing next page.

TABLE 2.14 • CAPE MAY COUNTY HIGH SCHOOL PENETRATION DATA

Year		2004	2005	2006	2007	2008
Lower Cape May	HS Grads	268	264	258.5	248.5	271
	Fall Enrolled	51	50	53	42	72
		19.0%	18.9%	20.5%	16.9%	26.5%
Middle Twp	HS Grads	218	265.5	282.5	242.5	239.5
	Fall Enrolled	35	42	39	56	66
		16.1%	15.8%	13.8%	23.1%	27.5%
Ocean City	HS Grads	327	308.5	343	362.5	357.5
	Fall Enrolled	39	50	53	60	75
		11.9%	16.2%	15.5%	16.6%	20.9%
Wildwood	HS Grads	49.5	60	52	69.5	73
	Fall Enrolled	9	6	10	20	19
		18.2%	10.0%	19.2%	28.8%	26.0%
Totals	HS Grads	862.5	898	936	923	941
	Fall Enrolled	134	148	155	178	232
		15.5%	16.5%	16.6%	19.3%	24.6%

TABLE 2.15 • ATLANTIC CAPE SERVICE AREA HIGH SCHOOL PENETRATION DATA

Year		2004	2005	2006	2007	2008
Atlantic County	HS Grads	2624	2731.5	2918	3034	2982.5
	Fall Enrolled	573	630	681	761	774
		21.80%	23.10%	23.30%	25.10%	25.95%
Cape May County	HS Grads	862.5	898	936	923	941
	Fall Enrolled	134	148	155	178	232
		15.50%	16.50%	16.60%	19.30%	24.65%
Atlantic Cape Service Area	HS Grads	3486.5	3629.5	3854	3957	3923.5
	Fall Enrolled	707	778	836	939	1006
		20.30%	21.40%	21.70%	23.70%	25.64%

Source for Tables 2.13, 2.14 and Table 2.15:

Atlantic Cape 10<sup>th</sup> day files and NJ Report Cards.

This table does not include unknown or missing high schools or CEEB Codes

Only PUBLIC High School information was included.

This table depicts HS students who graduated in the Spring of given year;

And who enrolled for credit courses in the fall of the same year at Atlantic Cape

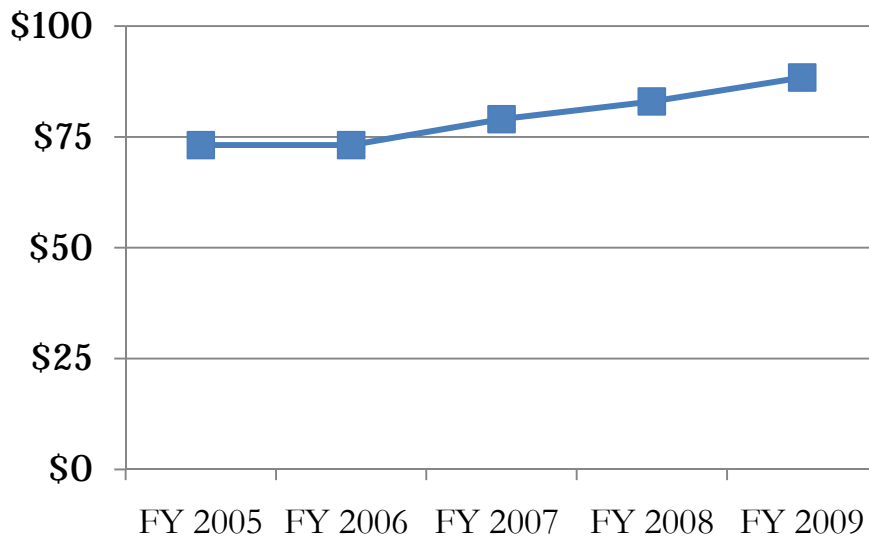
# STEWARDSHIP

TABLE 3.1 • TUITION RATES: FY 2005 – FY 2008

	FY 2005	FY 2006	FY 2007	FY 2008	FY 2009
Tuition	73.15	73.15	79	83	88.40

Source: Internal Data Collection

FIGURE 3.1 • TUITION RATES: FY 2005 – FY 2008



Source: Internal Data Collection

TABLE 3.2 • AVERAGE SALARIES OF 9 MONTH INSTRUCTIONAL STAFF: BY RANK

	FY 2005	FY 2006	FY 2007	FY 2008
All ranks	54110	54673	54631	57740
Professor	73822	79718	78832	82520
Assoc Prof	67130	62235	65245	70207
Asst Prof	46761	47134	45653	50085
Instructors	36756	38226	-	-
Lecturer	-	-	-	-
No Academic Rank	-	-	53242	52584

Source: IPEDS

TABLE 3.3 • FT FACULTY BY RACE AND ETHNICITY

	2004	2005	2006	2007	2008
White	65	73	-	89	91
African Amer.	5	6	-	6	5
Hispanic	4	5	-	5	7
Asian	3	2	-	2	2
Amer. Indian	0	0	-	0	0
Unknown	0	0	-	0	0
Non-Res. Alien	0	0	-	0	0
Total	77	86	-	102	105

Source: IPEDS

TABLE 3.4 • FTFT FINANCIAL AID TYPE: AMOUNT AND PERCENT

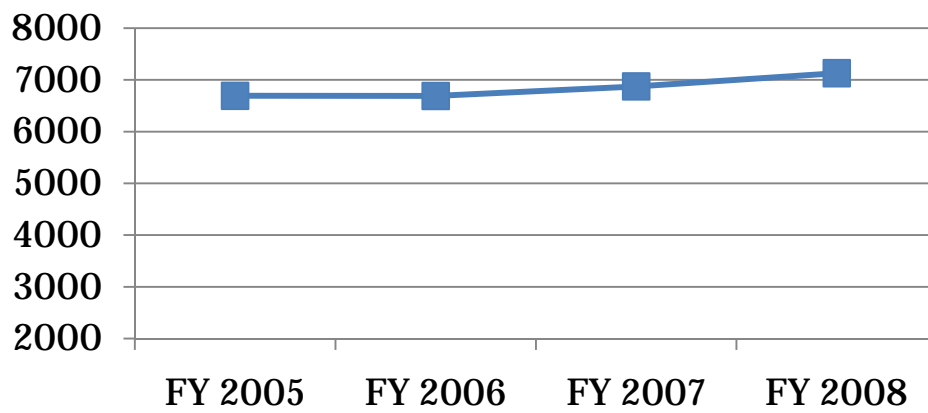
	FY 2004	FY 2005	FY 2006	FY 2007	FY 2008
Federal					
Amount	2836	2835	2744	2915	3212
Student %	32%	34%	31%	33%	46%
State/Local					
Amount	1579	1508	1855	2003	2154
Student #	23%	27%	28%	31%	41%
Institutional					
Amount	1102	1005	848	800	1396
Student #	3%	5%	6%	6%	3%
Loans					
Amount	3075	3839	3964	3679	4379
Student #	14%	12%	11%	13%	16%

Source: IPEDS

TABLE 3.5 • COST PER FULL TIME EQUIVALENT (FTE)

	FY 2005	FY 2006	FY 2007	FY 2008
Cost per FTE	6692	6689	6874	7129

Source: IPEDS



Source: IPEDS